

Postal Code 78660

Residential Statistics



October 2021

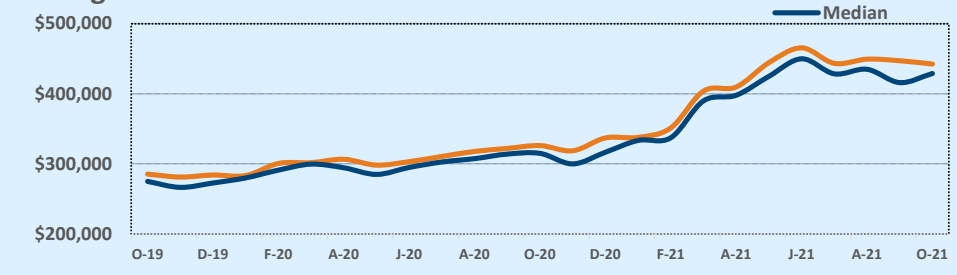
Listings	This Month			Year-to-Date		
	Oct 2021	Oct 2020	Change	2021	2020	Change
Single Family Sales	156	166	-6.0%	1,608	1,558	+3.2%
Condo/TH Sales	9	12	-25.0%	113	77	+46.8%
Total Sales	165	178	-7.3%	1,721	1,635	+5.3%
New Homes Only	4	13	-69.2%	90	161	-44.1%
Resale Only	161	165	-2.4%	1,631	1,474	+10.7%
Sales Volume	\$73,007,599	\$58,050,113	+25.8%	\$736,099,599	\$504,367,864	+45.9%
New Listings	245	177	+38.4%	2,116	1,799	+17.6%
Pending	--	--	--	--	--	--
Withdrawn	4	1	+300.0%	17	26	-34.6%
Expired	4	1	+300.0%	17	26	-34.6%
Months of Inventory	1.0	0.4	+165.8%	N/A	N/A	--

Price Range	This Month			Year-to-Date		
	New	Sales	DOM	New	Sales	DOM
\$149,999 or under	--	--	--	2	--	--
\$150,000- \$199,999	--	--	--	6	2	3
\$200,000- \$249,999	3	--	--	33	27	11
\$250,000- \$299,999	8	2	1	204	156	9
\$300,000- \$349,999	18	20	13	277	259	13
\$350,000- \$399,999	46	38	15	451	329	13
\$400,000- \$449,999	47	41	17	335	319	9
\$450,000- \$499,999	41	25	14	325	237	8
\$500,000- \$549,999	36	17	21	169	145	9
\$550,000- \$599,999	18	10	23	135	91	10
\$600,000- \$699,999	16	8	23	126	115	10
\$700,000- \$799,999	2	4	26	31	31	10
\$800,000- \$899,999	6	--	--	14	6	11
\$900,000- \$999,999	3	--	--	4	2	5
\$1M - \$1.99M	1	--	--	4	2	16
\$2M - \$2.99M	--	--	--	--	--	--
\$3M+	--	--	--	--	--	--
Totals	245	165	17	2,116	1,721	10

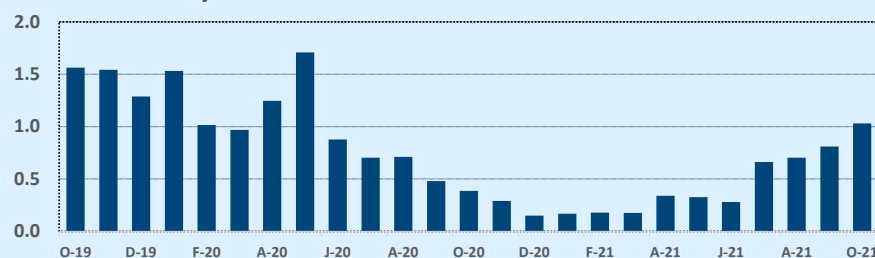
Average	This Month			Year-to-Date		
	Oct 2021	Oct 2020	Change	2021	2020	Change
List Price	\$432,265	\$322,975	+33.8%	\$395,455	\$308,857	+28.0%
List Price/SqFt	\$215	\$145	+48.9%	\$188	\$143	+31.9%
Sold Price	\$442,470	\$326,124	+35.7%	\$427,716	\$308,482	+38.7%
Sold Price/SqFt	\$221	\$146	+50.9%	\$204	\$143	+42.9%
Sold Price / Orig LP	102.7%	101.0%	+1.7%	108.6%	99.9%	+8.7%
Days on Market	17	22	-23.7%	10	31	-66.8%

Median	This Month			Year-to-Date		
	Oct 2021	Oct 2020	Change	2021	2020	Change
List Price	\$415,000	\$318,345	+30.4%	\$375,000	\$299,900	+25.0%
List Price/SqFt	\$212	\$142	+49.1%	\$186	\$141	+32.0%
Sold Price	\$429,000	\$315,050	+36.2%	\$410,000	\$300,000	+36.7%
Sold Price/SqFt	\$217	\$146	+49.1%	\$203	\$141	+43.7%
Sold Price / Orig LP	100.9%	100.0%	+0.9%	106.0%	100.0%	+6.0%
Days on Market	8	5	+60.0%	5	8	-37.5%

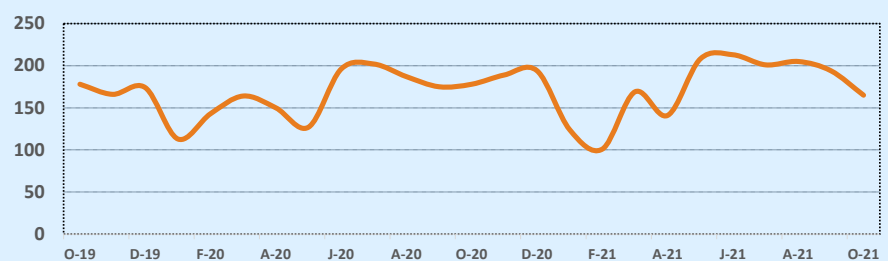
Average & Median Sales Price - Last Two Years



Months of Inventory - Last Two Years



Number of Sales - Last Two Years



Based on information from the Austin Board of REALTORS® (alternatively, from ACTRIS). Neither the Board nor ACTRIS guarantees or is in any way responsible for its accuracy. The Austin Board of REALTORS®, ACTRIS and their affiliates provide the MLS and all content therein "AS IS" and without any warranty, express or implied. Data maintained by the Board or ACTRIS may not reflect all real estate activity in the market.